

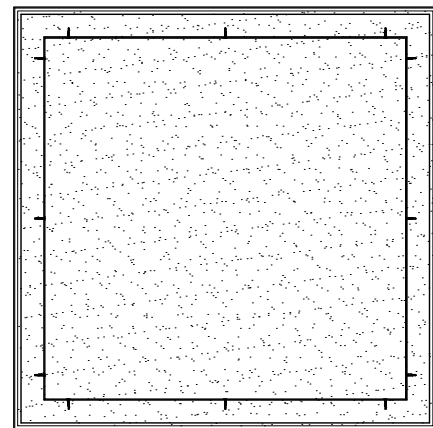
**SECTION A - A**



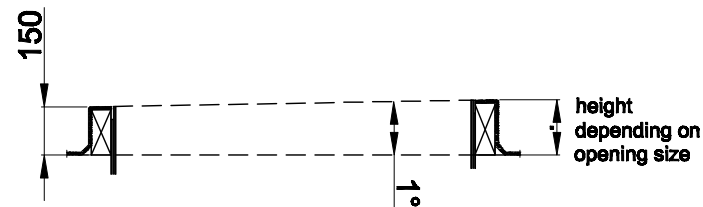
**SECTION B - B**



**PLAN VIEW**



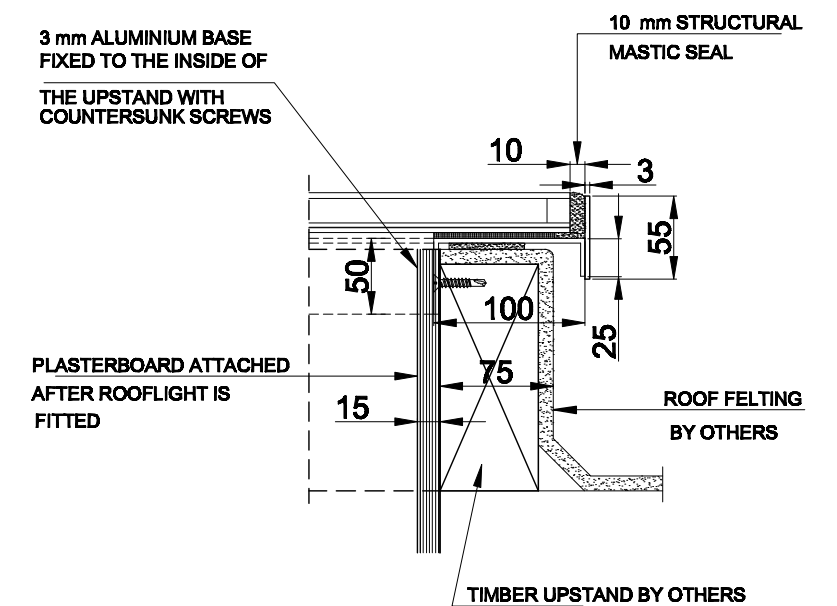
**UPSTAND ( by others )**



**UPSTAND NEEDS 1° SLOPE  
IN ONE DIRECTION TO ALLOW  
WATER TO RUN OFF.**

**STRUCTURE :**  
4 mm THICK FOAM LAYER  
3 mm THICK ALUMINIUM BASE ,  
FASTENED INSIDE THE UPSTAND  
3 mm THICK ALUMINIUM KEEPER PLATE  
10 mm MASTIC SEAL ALL AROUND

**DETAIL**



BBS -Mk. 7 flat glazed rooflights can be manufactured to any bespoke size requested by the customer, up to a maximum roof opening size of 1500 x 2000 mm  
Mk.7 rooflights are fitted with standard glazing comprising 6 mm clear toughened outer , 16 mm argon cavity and 6,4 mm clear laminated low E inner .  
Other glass specifications such as obscure , self cleaning and solar control are available on request .  
Panel sizes should not exceed 1270 mm x 1270 mm if the rooflight has to comply with ACR [M]001:20122 requirements .

Mk. 7 rooflights are fitted inside the roof opening with countersunk screws to allow the customer to fit plasterboards on top of the BBS-base

DRAWING NUMBER :  
**A3 - MK7 - WEB 20**

**BBS Building Components**

DRAWING TITLE:  
**BBS-MARK 7 MONO-PITCH ROOFLIGHT  
ON SLOPED UPSTAND , FLUSH GLAZED**

FIRST ISSUE DATE:  
**OCT.2013**  
SCALE:  
**1:25 / 1:5**