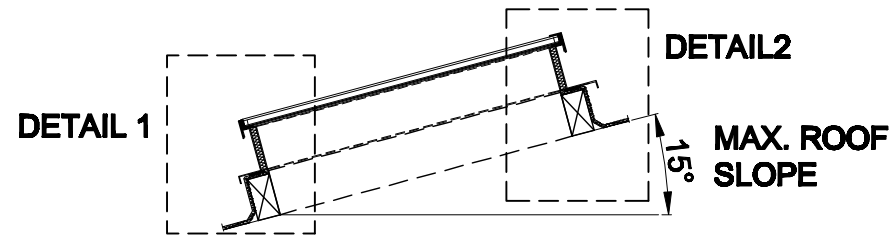
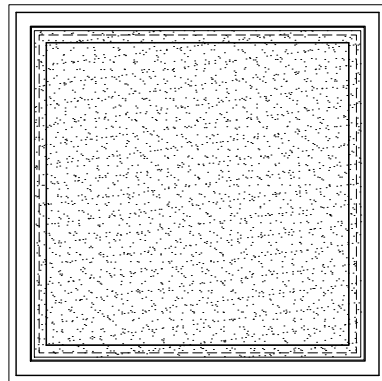


**SECTION**



**PLAN VIEW**

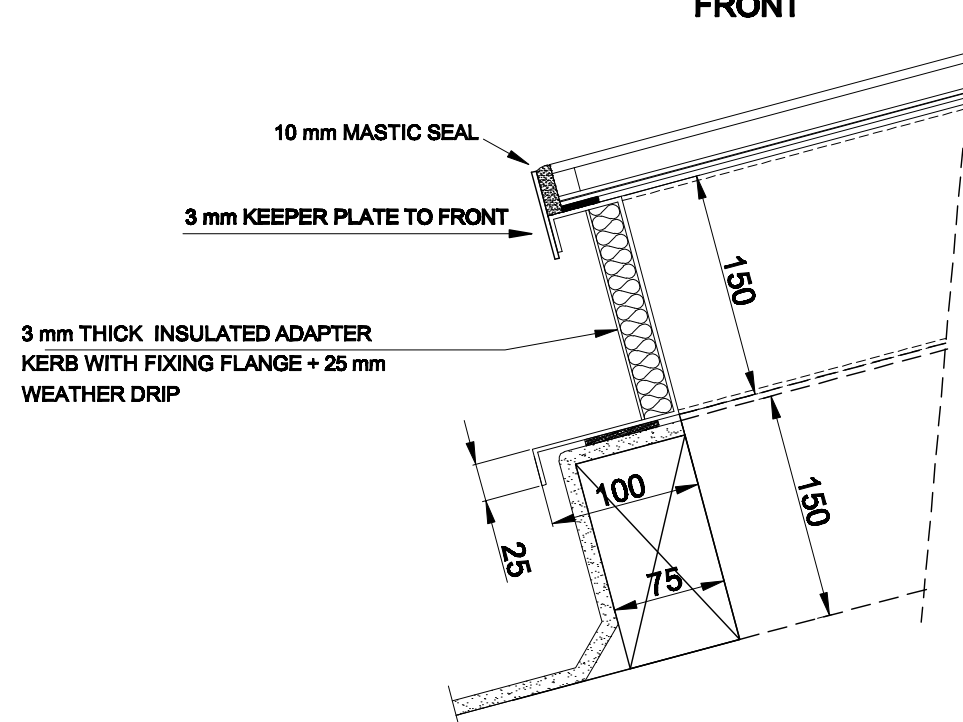


BBS - Mk. 4 rooflights can be manufactured to any bespoke size requested by the customer . Mk.4 rooflights are fitted with standard glazing comprising 6 mm clear toughened outer , 16 mm argon cavity and 6,4 mm clear laminated low E inner . Other glass specifications such as obscure , self cleaning and solar control are available on request . Panel sizes should not exceed 1270 mm x 1270 mm if the rooflight has to comply with ACR [M]001:20122 requirements .

100 mm fixing flanges with 25 mm weather drips as standard but can be manufactured to suit any existing felted timber kerb sizes .

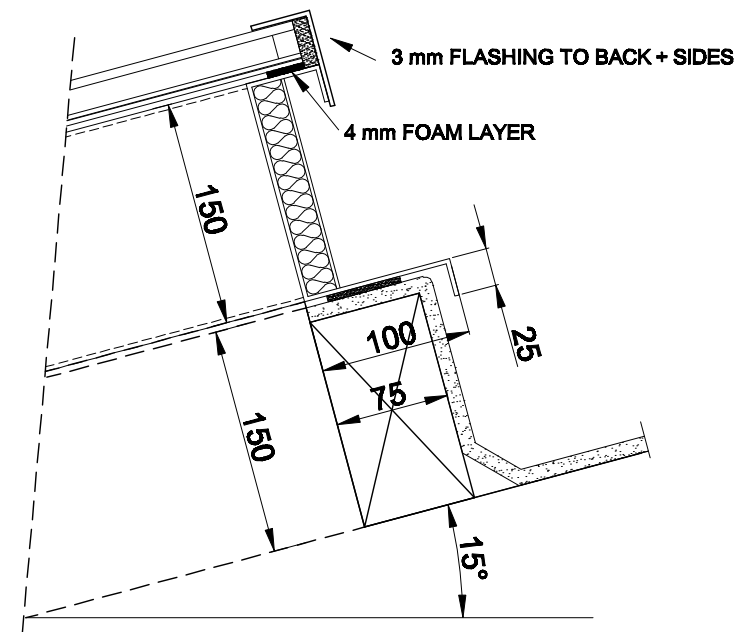
Mk. 4 rooflights should not be fitted to roof pitches above 15 degrees.

**DETAIL 1 FRONT**



SLOPE NOT TO EXCEED 15 °

**DETAIL 2 BACK**



DRAWING NUMBER :  
**A3 - MK4 - WEB 03**

**BBS Building Components**

DRAWING TITLE: **FIXED GLAZED  
BBS -MARK 4 MONO-PITCH ROOFLIGHT  
ON SLOPED ROOF - ON UPSTAND**

FIRST ISSUE DATE:  
**OCT.2013**

SCALE:  
**1:25 / 1:5**