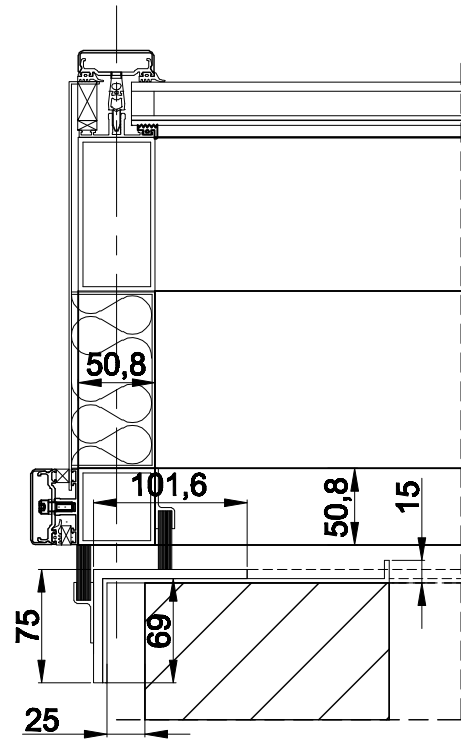
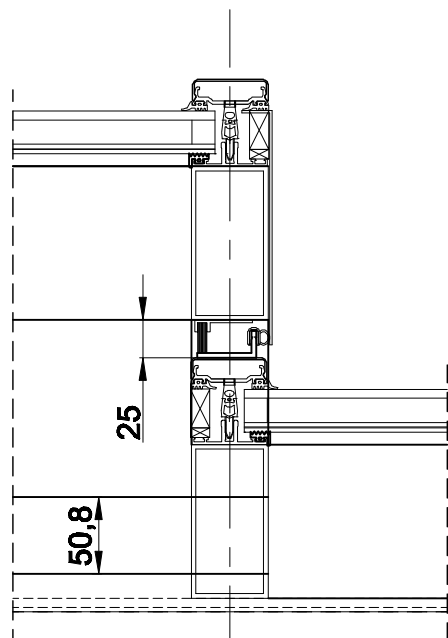


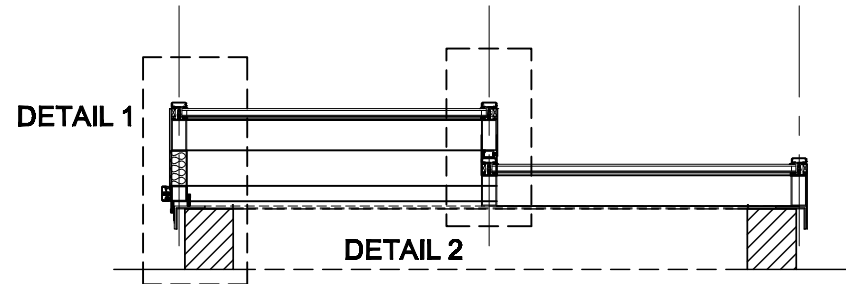
DETAIL 1
SHOWING INSULATION
BETWEEN BOX SECTIONS



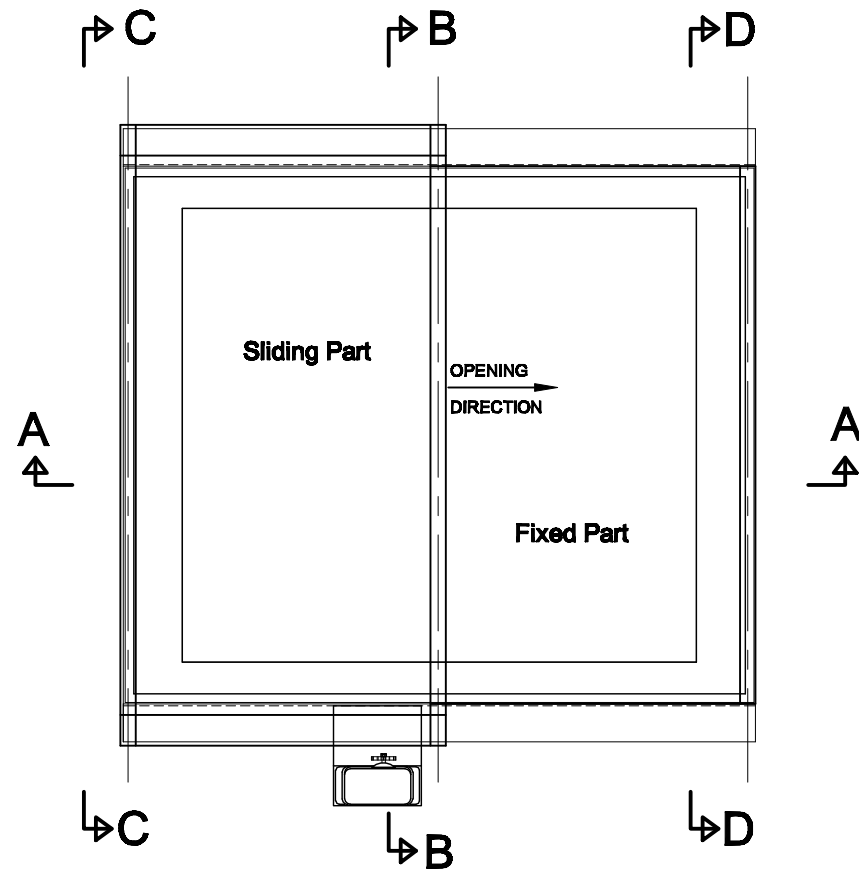
DETAIL 2



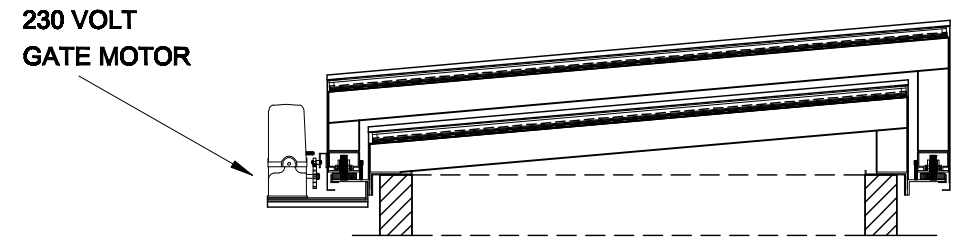
SECTION A - A



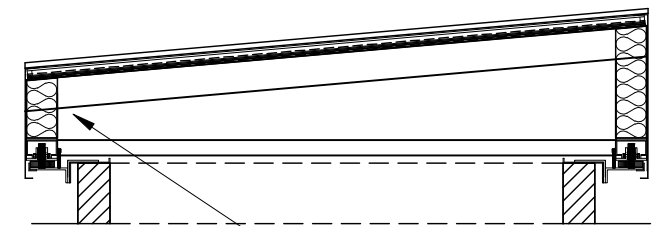
PLAN VIEW



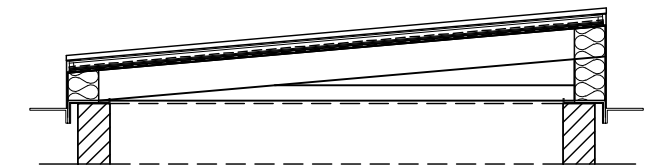
SECTION B - B



SECTION C - C
SLIDING PART



SECTION D - D
FIXED PART



SHOWING INSULATION
BETWEEN TRANSOMES

BBS Mono-Pitch Sliding Rooflights can be manufactured to any bespoke size requested
BBS - Mono-Pitch Sliding Rooflights are usually fitted with standard Double Glazing comprising
6 mm Clear toughened outer
16 mm Argon cavity
6,4 mm Clear Low E laminated inner
Panel sizes should not exceed 1270 mm x 1270 mm if the rooflight has to comply with ACR [M]001:20122 requirements .

DRAWING NUMBER :
A3 - SL - WEB 54
BBS Building Components

DRAWING TITLE:
ELECTRIC MONO-PITCH TELESCOPIC SLIDING RL WITH GATE MOTOR

FIRST ISSUE DATE:
DEC.2013
SCALE:
1:25 / 1:5